

AUM 018.1 - low stainless steel washbasin for one water



AUM 018 is a low automatic stainless wash basin designed to be fixed on wall and suitable in all places with limited depth. The wash basin contains welded-on stainless waste trap positioned in the rear to take up as little space as possible and to resist to unwilling or intentional damage. The wash basin can be delivered separately or equipped with automatic mixer designed for pre-mixed (one) water, for two waters (hot and cold) or with thermostatic valve. Optoelectronic sensor reacts to hands under the arm ? when hands are placed to sensor zone water automatically starts running as the electromagnetic valve opens. The valve stays open for a pre-set period of time after hands are removed (decay time). Power can be supplied from 12 V ZAC source or from four AAA batteries in the case of battery-supplied model. Wash basin is equipped against hot water overpressure. The wash basin supplied without tap is equipped by a hole for pillar mixer as a standard. It can also be delivered without the hole ? for a wall mixer. The wash basin is made of 1.5 and 2 mm thick material with robust brackets to hold the wash basin. The AUM 018 stainless steel washbasin, in its construction and finish, meets EU standards and is mainly intended for food processing industry. It may be utilized in any other operations, where increased hygienic standards along with maximal water savings are required. AUM 018 is manufactured from the stainless steel AISI 304. For cleaning we recommend WÜRTH detergents ? material preservation (no. 0893 121 K) and material cleaning (no. 893 121 1).

Rating: Not Rated Yet

[Ask a question about this product](#)

Manufacturer: [AZP Brno](#)

Description AUM 018 is a low automatic stainless wash basin designed to be fixed on wall and suitable in all places with limited depth. The wash basin contains welded-on stainless waste trap positioned in the rear to take up as little space as possible and to resist to unwilling or intentional damage. The wash basin can be delivered separately or equipped with automatic mixer designed for pre-mixed (one) water, for two waters (hot and cold) or with thermostatic valve. Optoelectronic sensor reacts to hands under the arm ? when hands are placed to sensor zone water automatically starts running as the electromagnetic valve opens. The valve stays open for a pre-set period of time after hands are removed (decay time). Power can be supplied from 12 V ZAC source or from four AAA batteries in the case of battery-supplied model. Wash basin is equipped against hot water overpressure. The wash basin supplied without tap is equipped by a hole for pillar mixer as a standard. It can also be delivered without the hole ? for a wall mixer. The wash basin is made of 1.5 and 2 mm thick material with robust brackets to hold the wash basin. The AUM 018 stainless steel washbasin, in its construction and finish, meets EU standards and is mainly intended for food processing industry. It may be utilized in any other operations, where increased hygienic standards along with maximal water savings are required. AUM 018 is manufactured from the stainless steel AISI 304. For cleaning we recommend WÜRTH detergents ? material preservation (no. 0893 121 K) and material cleaning (no. 893 121 1).

Complete delivery

1. st. steel washbasin with fixing cantilever
2. small fixing material
3. automatic tap AUM 3 (according to chosen power supply and water inlet) - for versions including automatic tap

Requirements for setting up the construction

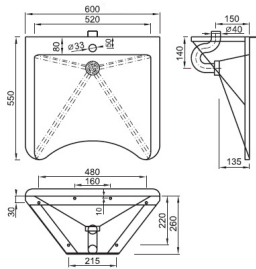
1. Prepared outlet d = 40 mm according to the scheme
2. Prepared water inlet G 1/2" according to the scheme (only for versions including tap)
3. Prepared el. supply cable 12 V, 50 Hz from source ZAC (CYKY 2A x 1,5) - only for 12 V versions

Download information about the product

- [AUM 018 data for projectants - \(30 kB \)](#)

Basic technical information	Radius of sensor	self-adjusting
	Water inlet	11 kg (AUM 018 including tap)
	Water outlet	G 1/2"
	Inner dimensions of sink	d = 40 mm
	Adjustable time of after-flow delay	520 x 470
	Water pressure	0.4 s (adjusted to 1 s)
	Power supply	0,1-1,0 MPa (0,2-0,8 MPa battery versions)
	Power requirement	12 V, 50 Hz
	Source of power supply	6 VA
	Weight	ZAC 1/20 (max. 3 x AUM 018.1, 018.TV and max. 2 x 018.2)
		9 kg (AUM 018)

Figures



Reviews

There are yet no reviews for this product.