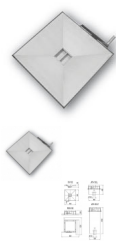


OV 02 - stainless steel sewer inlet



OV 02 is a stainless steel sewer inlet that is intended for waste disposal of the caravans. Its construction enables vehicles to drive over the sewer. It is possible to place the sewer on:- existing sewer shaft (only in combination with the installation frame ROV 02)- waste trap for summer service JOV 02.L- waste trap for winter service JOV 02.Z Waste traps are set up with a siphon that enables connection to the outlet d = 110 mm. Both waste traps are including the installation frame ROV 02.

Rating: Not Rated Yet
[Ask a question about this product](#)

Manufacturer: [AZP Brno](#)

Description OV 02 is a stainless steel sewer inlet that is intended for waste disposal of the caravans. Its construction enables vehicles to drive over the sewer. It is possible to place the sewer on:- existing sewer shaft (only in combination with the installation frame ROV 02)- waste trap for summer service JOV 02.L- waste trap for winter service JOV 02.Z Waste traps are set up with a siphon that enables connection to the outlet d = 110 mm. Both waste traps are including the installation frame ROV 02.

Requirements for setting up the construction

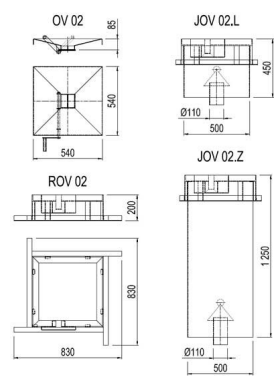
- 1. Set up suitable hole in the ground:JOV 02.L ? 630 × 630 × 200 mm (top of the hole) and 530 × 530 × 250 mm beneath JOV 02.Z ? 630 x 630 x 200 mm (top of the hole) and 530 × 530 ×1050 mm beneathROV 02 ? 830 × 830 × 200 mm
- 2. Set up outlet d = 110 mm
- 3. Set up sump for ROV 02

Basic technical informationOV 02

Dimensions	830 × 830 × 200 mm
Weight-carrying capacity	3500 kg
ROV 02	
JOV 02.L	
Inner dimensions	500 × 500 × 1250 mm
Total dimensions	630 × 630 × 1250 mm
JOV 02.Z	
Outlet	d = 110 mm

Figures

Sewer inlets : OV 02 - stainless steel sewer inlet



Reviews

There are yet no reviews for this product.