

BSNZ 02 - vandal-proof stainless steel toilet for free-standing



BSNZ 02 is a vandal-proof stainless steel toilet without automatics which is intended for free-standing. It is convenient in all places where it is not possible to use wall-hung toilet (e.g. in case of low carrying capacity of the wall). In standard version the outlet is directed into the floor. Outlet directed into the wall is possible on customer's wish. The housing of the toilet is made from the stainless steel of 2 mm thickness, the sitting part of 4 mm thickness. For higher comfort of the user are the edges of the sitting part grinded down. A set with an AUZ 3 automatic flushing system and KZ 1 cantilever, or with an AUZ 5 (in-wall toilet module) flushing system can be completed. The closet is also produced in standard version (AUZ 02) which is made from the stainless steel sheet of 1,5 mm thickness, sitting part of 2 mm thickness and is quipped with plastic sitting board.

Rating: Not Rated Yet

[Ask a question about this product](#)

Manufacturer: [AZP Brno](#)

Description BSNZ 02 is a vandal-proof stainless steel toilet without automatics which is intended for free-standing. It is convenient in all places where it is not possible to use wall-hung toilet (e.g. in case of low carrying capacity of the wall). In standard version the outlet is directed into the floor. Outlet directed into the wall is possible on customer's wish. The housing of the toilet is made from the stainless steel of 2 mm thickness, the sitting part of 4 mm thickness. For higher comfort of the user are the edges of the sitting part grinded down. A set with an AUZ 3 automatic flushing system and KZ 1 cantilever, or with an AUZ 5 (in-wall toilet module) flushing system can be completed. The closet is also produced in standard version (AUZ 02) which is made from the stainless steel sheet of 1,5 mm thickness, sitting part of 2 mm thickness and is quipped with plastic sitting board.

Complete delivery

1. stainless steel closet
2. anchoring material

Requirements for setting up the construction

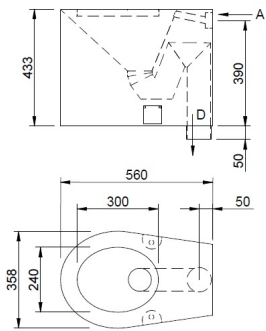
1. Water installation set up as per picture
2. Set-up alcove for installation casket (only for AUZ 3)
3. Set-up cable for power supply ? 12 V, 50 Hz from source of power supply ZAC (only for AUZ 3)
4. Set-up outlet d = 90 mm as per picture
5. Set-up the cantilever or other system for hanging the closet

Download information about the product

- [BSNZ 02 data for projectants - \(35 kB \)](#)

Basic technical information	Water inlet	d = 34 - 50 mm
	Min. water flow	70 ltrs./min
	Outlet	d = 90 mm
	Weight	23 kg

Figures



Reviews

There are yet no reviews for this product.